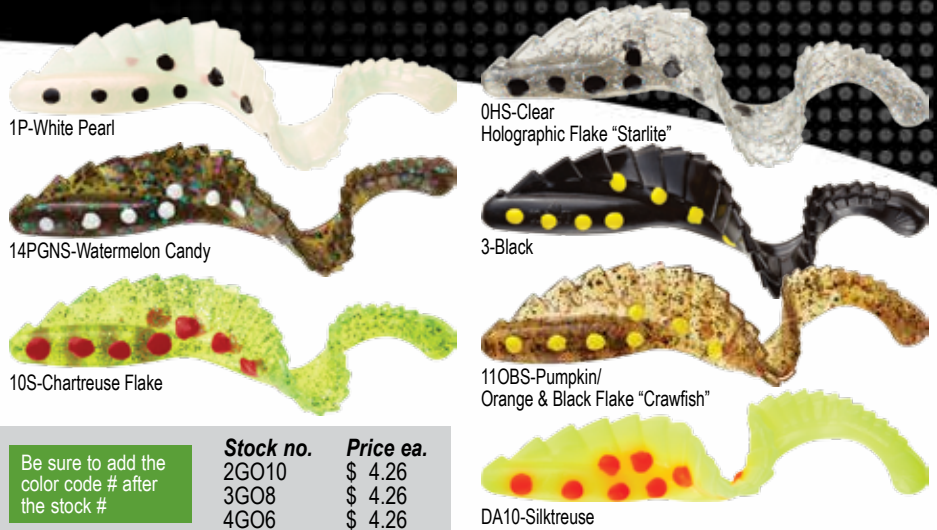




G-Grub

Innovative full body action fins give a full body profile with swimming action and vibration from the tip down. Use a steady retrieve, stop and go, or vertically jig.

Rattle chamber in the tail is a perfect spot for adding sound.



G-Grub

- 2" 10/clamshell (spots may vary)
- 3" 8/clamshell (spots may vary)
- 4" 6/clamshell (spots may vary)

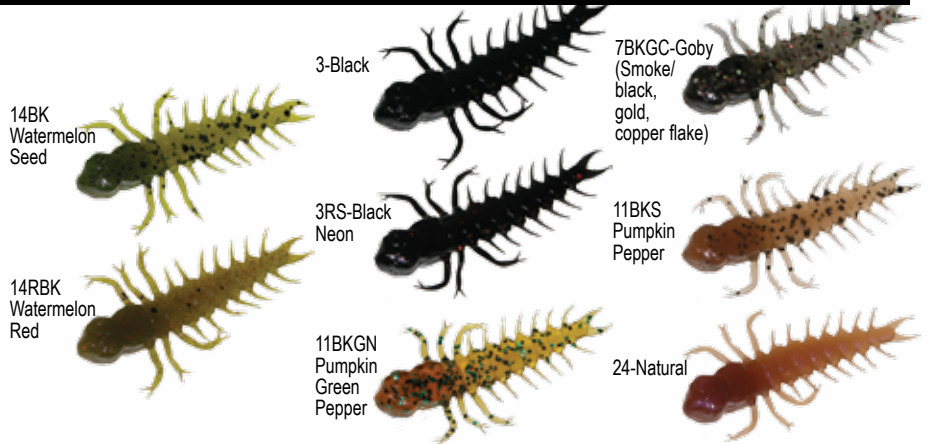
Be sure to add the color code # after the stock #

Stock no.	Price ea.
2GO10	\$ 4.26
3GO8	\$ 4.26
4GO6	\$ 4.26

DA10-Silktrouse

Twister Mite

The Mister Twister® TwisterMite is perfect for trout, crappie, panfish, and smallmouth. Rig with a jig or rig it as a drop shot lure. It is also ideal for Carolina rigging. Available in eight proven colors.



2 3/4" TwisterMite
15/resealable bag
Stock # MTTM15
Price \$4.33

Be sure to add the color code # after the stock #

2" Tri-Alive® Hot Curly Tail®

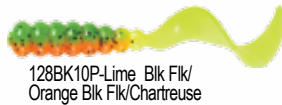
Greg Yates

2" Tri-Alive® Hot Curly Tail®
20/resealable bag

Be sure to add the color code # after the stock #

Stock no. TA2CT20
Price ea. \$ 4.05

Color contrast for sight stimulus, and extreme tail action to enhance vibration, a deadly combination.



128BK10P-Lime, Blk Flk/
Orange Blk Flk/Chartreuse



591-Blue/Red/White



31P10S-Black/Pearl/
Chartreuse Silver Flake



9010S-Red/Clear/
Chartreuse Flake



3610S-Black/Pink/
Chartreuse Flake



N122BK-Lime/
Black Flake/Yellow



0S510S-Clear Flake/Blue/
Chartreuse Silver Flake



51P0S-Blue/Pearl/
Clear Silver Flake



0S-Clear Silver Flake/
Black Back



13GNS10-Junebug/
Chartreuse



N3RS1P-
Black Red Flake/Pearl

