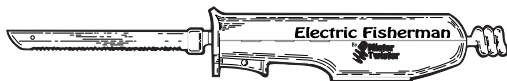


The Original
Mister Twister®
 Electric Fisherman®



Extra sharp blade for fast, easy filleting.

Quick & convenient blade release.

Safety lock.

Lightweight, comfortable handle for better control.

Heavy duty motor for longer life.

High impact motor housing.

Durable, expandable curly power cord.



FREE Mister Twister® Tackle catalog
 See the entire line-up of Mister Twister products, including the **Electric Fisherman®** in full color.

CALL: 800-344-6331

NAME: _____

ADDRESS: _____

CITY: _____ ST: _____ ZIP: _____

MAIL TO: **Mister Twister**

PO Box 1152, Minden, LA 71058-1152

www.mistertwister.com

Mister Twister

©2000 Mister Twister, LLC

The Original
Mister Twister®
 Electric Fisherman®

Extra sharp blade for fast filleting

30% More Power

50% more Cutting Torque
Put an end to the hassle of cleaning fish.

Rated #1

If you'd like to spend more time fishing and less time cleaning your catch, you owe it to yourself to switch to the industry's #1 fish fillet knife, the Electric Fisherman® from Mister Twister®. No one knows more about electric fish fillet knives than Mister Twister because the

Safety lock

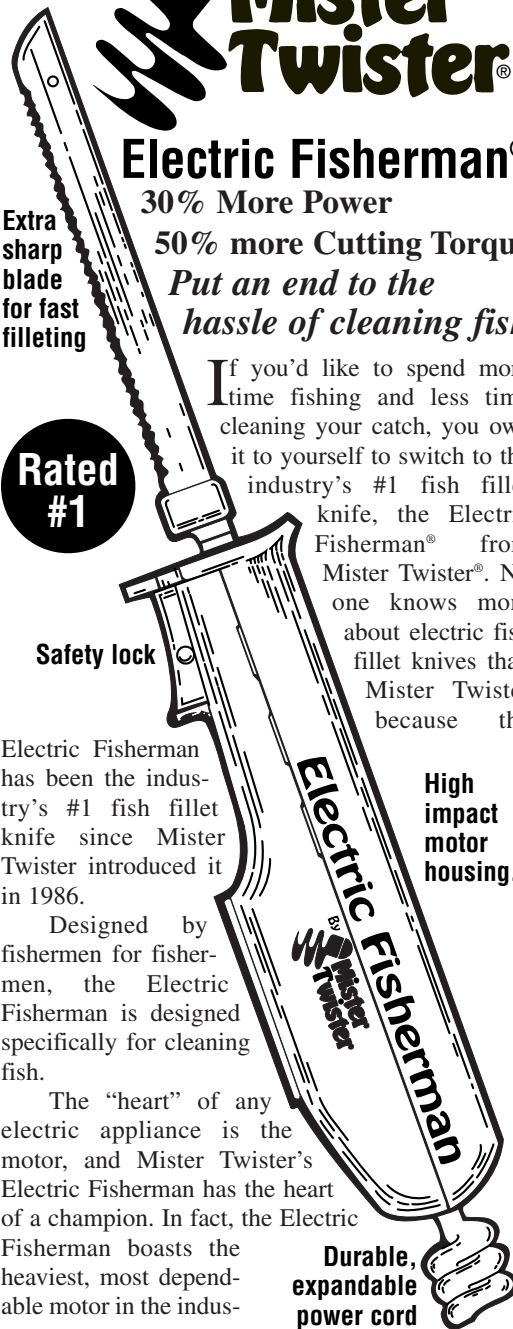
Electric Fisherman has been the industry's #1 fish fillet knife since Mister Twister introduced it in 1986.

Designed by fishermen for fishermen, the Electric Fisherman is designed specifically for cleaning fish.

The "heart" of any electric appliance is the motor, and Mister Twister's Electric Fisherman has the heart of a champion. In fact, the Electric Fisherman boasts the heaviest, most dependable motor in the indus-

High impact motor housing.

Durable, expandable power cord



try. Featuring top-quality sintered brass bearings, the Electric Fisherman's rugged 110 volt motor is designed to be cleaning fish long after the competition has failed.

In addition to its rugged motor, the Electric Fisherman boasts a razor sharp seven-inch stainless steel blade that cuts thinner, cleaner and closer to the bone. It slices through both meat and bone effortlessly and stays sharp even after repeated use. Most fish can be cleaned in three fast and easy steps.

A nine-inch blade is available for the big water

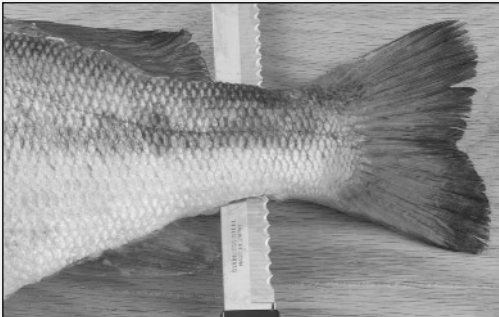
fisherman. It's perfect for those Canadian or Alaska fishing trips.

Other great Electric Fisherman features include a quick and convenient blade release, safety lock, lightweight, comfortable handle design, a high impact motor housing and a durable, expandable curly power cord.

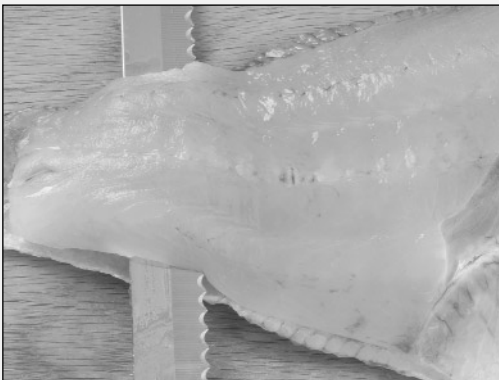
Because the Electric Fisherman is so fast and easy to use, you'll spend more time catching fish and less time cleaning them. In fact, you'll have those fresh fish fillets in the pan in a matter of minutes.



Place the fish on a firm cutting surface. Grasp the fish's mouth with your first two fingers and thumb and run the blade of the Mister Twister Electric Fisherman downward behind the gills and the pectoral (side) fin until the blade reaches the backbone.



Turn the blade to run parallel along the backbone. Slowly work the blade through the ribcage, staying close to the backbone as possible. Continue cutting to a point 3/4" from the tail.



Stopping at the tail, flip the sliced portion over so the skin is laying on the cutting surface and run the blade forward at a slight downward slant, until the flesh is separated from the skin.

Cut the rib cage from the fillet.

Repeat on the other side.